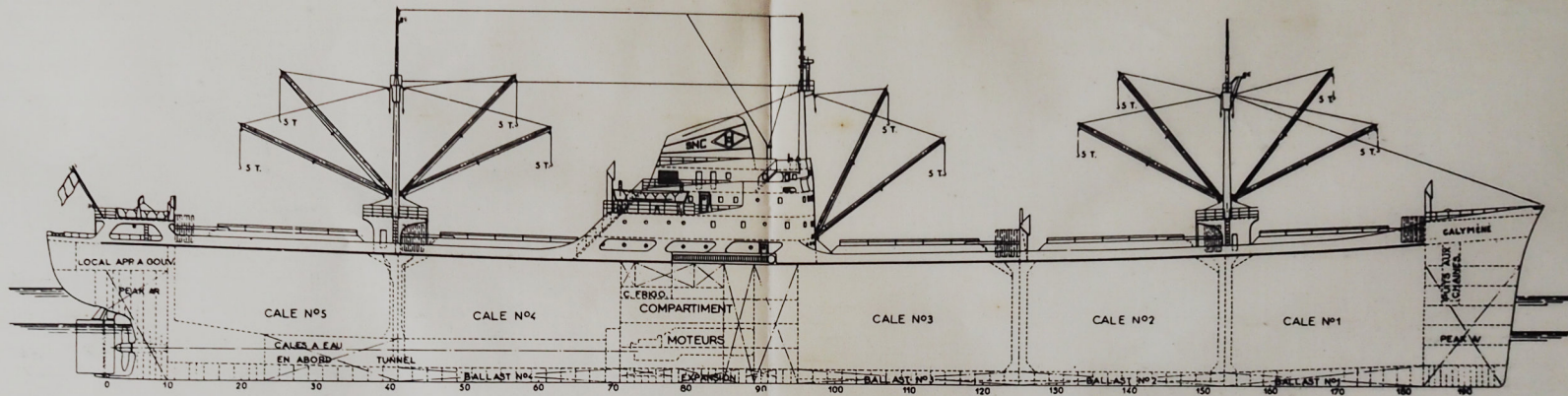
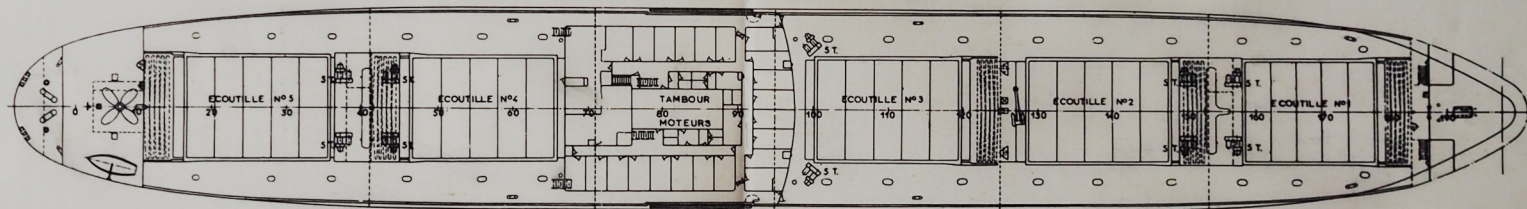


MINERALIER CHARBONNIER "CALYMENE"

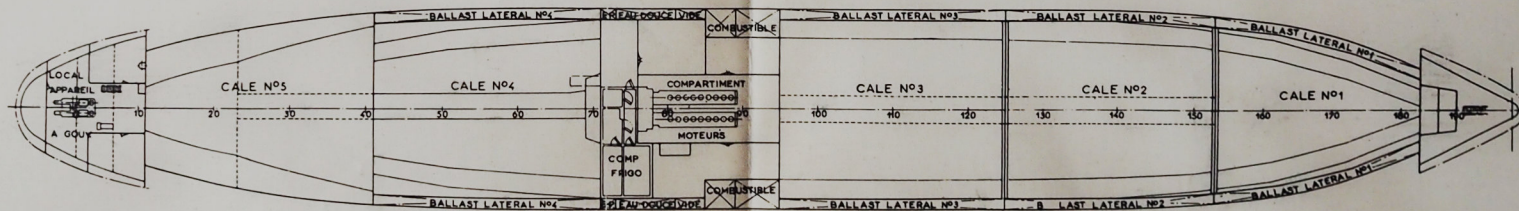
- ECHELLE : 1/500^e -



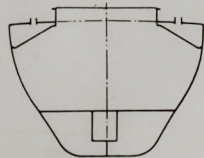
DESSUS PONT PRINCIPAL ET ROOFS.



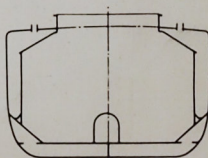
CALES ET PLATEFORMES.



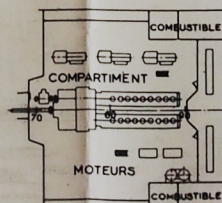
COUPE CALE N°5



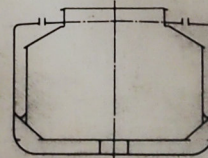
COUPE CALE N°4



PLATEFORME INFRE



COUPE CALES N°2 ET 3



COUPE CALE N°1

